

WHITE-RODGERS™

791P-751KT1

Premium 3-Wire Pilot Burner Assembly With Safety Switch

INSTALLATION INSTRUCTIONS

FAILURE TO READ AND FOLLOW ALL INSTRUCTIONS CAREFULLY BEFORE INSTALLING OR OPERATING THIS CONTROL COULD CAUSE PERSONAL INJURY AND/OR PROPERTY DAMAGE.

DESCRIPTION

The 791P-751KT1 Pilot Burner Assembly with safety switch is a 3 wire pilot assembly designed for use with natural or liquefied petroleum gas. The kit comes with an electrode assembly to create a complete replacement for the Carrier LH680005 and other valid part numbers.

This 3 wire pilot is manufactured by an OEM qualified source. It incorporates a proprietary bi-metal switch using precious metal contacts to protect from oxidation and scaling. The component is 100% performance tested including switching.

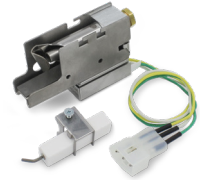
INCLUDED IN THE BOX

- 1 – Pilot Burner Assembly with Safety Switch and **OEM quick connect plug**
- 1 – Electrode Assembly
- 1 – Installation Instructions

SPECIFICATIONS

Specification	Value		Unit
Input Voltage	18-33		VAC
Input Current	1.0		amp
Line Frequency	60		Hz
Operating Temperature Range	- 40 to 1225		°F
	- 40 to 662		°C
Gas Type	Natural Gas	LP	
Recommended Gas Input Rating	875 +/- 10%	725 +/- 10%	BTU/hr
Recommended Gas Orifice Size	0.018	0.012	Inches
Recommended Gas Inlet Pressure	5.00 +/- 0.25	11.00 +/- 0.25	in. W.C.
Lead Wire Length	9.125		inches
Lead Wire Gauge	18		AWG
Spark Gap (Minimum)	0.156		inches

CSA Agency
Approved



WARNING

Failure to comply with the following warnings could result in personal injury or property damage

- Installation should be done by a qualified heating and air conditioning contractor or licensed electrician.
- All wiring must conform to local and national electrical codes and ordinances.
- Following installation or replacement, follow manufacturer's recommended installation/service instructions to ensure proper operation.

FIRE HAZARD

- Do not exceed the specified voltage.
- Protect assembly from direct contact with water (dripping, spraying, rain, etc.).
- If the assembly has been in direct contact with water, replace the assembly.
- Label all wires before disconnection when servicing controls. Wiring errors can cause improper and dangerous operation.
- Route and secure wiring away from flame.

SHOCK HAZARD

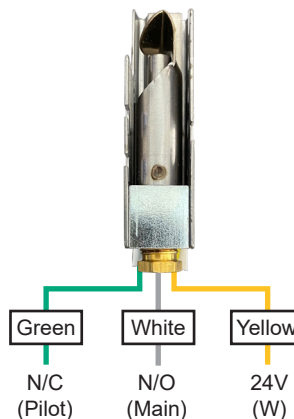
- Disconnect electric power before servicing.
- Ensure proper earth grounding of appliance.
- Ensure proper connection of line neutral and line hot wires.

EXPLOSION HAZARD

- Shut off main gas to appliance until installation is complete.

INSTALLATION

1. Disconnect electric power and gas to the unit, then remove unit access panels.
2. Take a photo of the current wiring and location of the pilot assembly.
3. Disconnect the wiring from the gas valve and remove the pilot assembly.
4. Reinstall new pilot assembly back into the original position and connect the lead wires back to the gas valve terminals. Refer to picture taken in step 2 to ensure proper location and position.
5. Connect electric power and gas.
6. Ensure the pilot is burning properly and the unit is heating normally.



CROSS REFERENCES

Manufacturer	Part Number
Robertshaw	1830-620K
	1830-620
Supco	FLS0005
Carrier, Bryant, Day & Night, Payne	LH680005
	LH33JZ053
	535-740A
	P671-1406
	CARL38999
	CAR1830620
	1830-620
	535-733B
DiversiTech	FC-74
Unbranded Generic	PS-730A
MARS	67945

For a 2 wire application:

1. Cut and remove the plug connector from 791P-751KT1.
2. Install a wire nut on the end of the green wire.
3. Strip the yellow and white wires back 1/2 inch.
4. Make connection to yellow and white wires as required.

